

Healthcare Leader Surge Infrastructure Pre-Assessment Tool

Introduction

This Healthcare Leader Surge Infrastructure Pre-Assessment Tool outlines an assessment process to assist healthcare leaders and facilities engineers in determining steps in evaluating existing clinical spaces to increase capacity due to a surge in patient demand, either overall or in those requiring transmission-based precautions, while supporting infection prevention and control. Using a combination of mode of transmission as well as existing facility capacity, the tool provides a recommendation to pursue an assessment for one of the following:

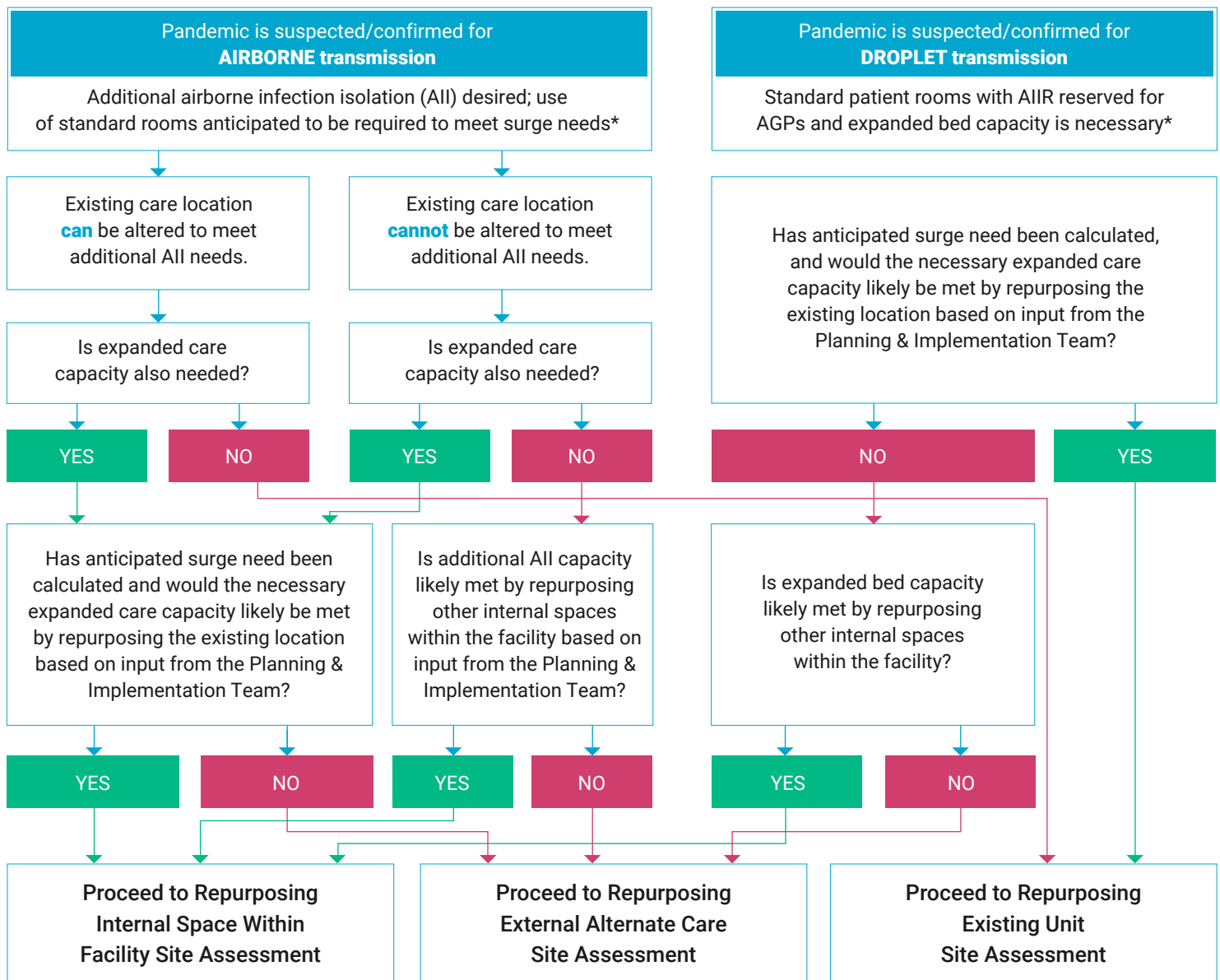
- 1) repurpose internal space within the facility,
- 2) repurpose external alternate care site, or
- 3) repurposing an existing unit.

For high consequence infectious diseases such as viral hemorrhagic fevers, additional evaluation of clinical spaces is required and recommendations are provided.

This tool is **Step 1** in a 5-step process to help healthcare leader and facility engineers determine the patient care needs for pandemic care delivery.



Healthcare Leader Surge Pre-Assessment Tool



*In a pandemic it is likely the demand for AIIR will outstrip the available capacity. Use of AIIRs and additional All capacity will need to be prioritized. Use of standard rooms should be anticipated.